



**HAMILTON**  
REAL ESTATE GROUP

55th Street



18th Avenue

# PRIME DEVELOPMENT LOTS FOR SALE

## IN NORTHWEST ROCHESTER, MN

### Property Description:

- Be a part of the fastest growing area in Rochester!
- Key retail, commercial, multifamily lots available.
- Lots will be shovel ready for your project fall of 2024.
- Don't miss the opportunity to join this amazing development!

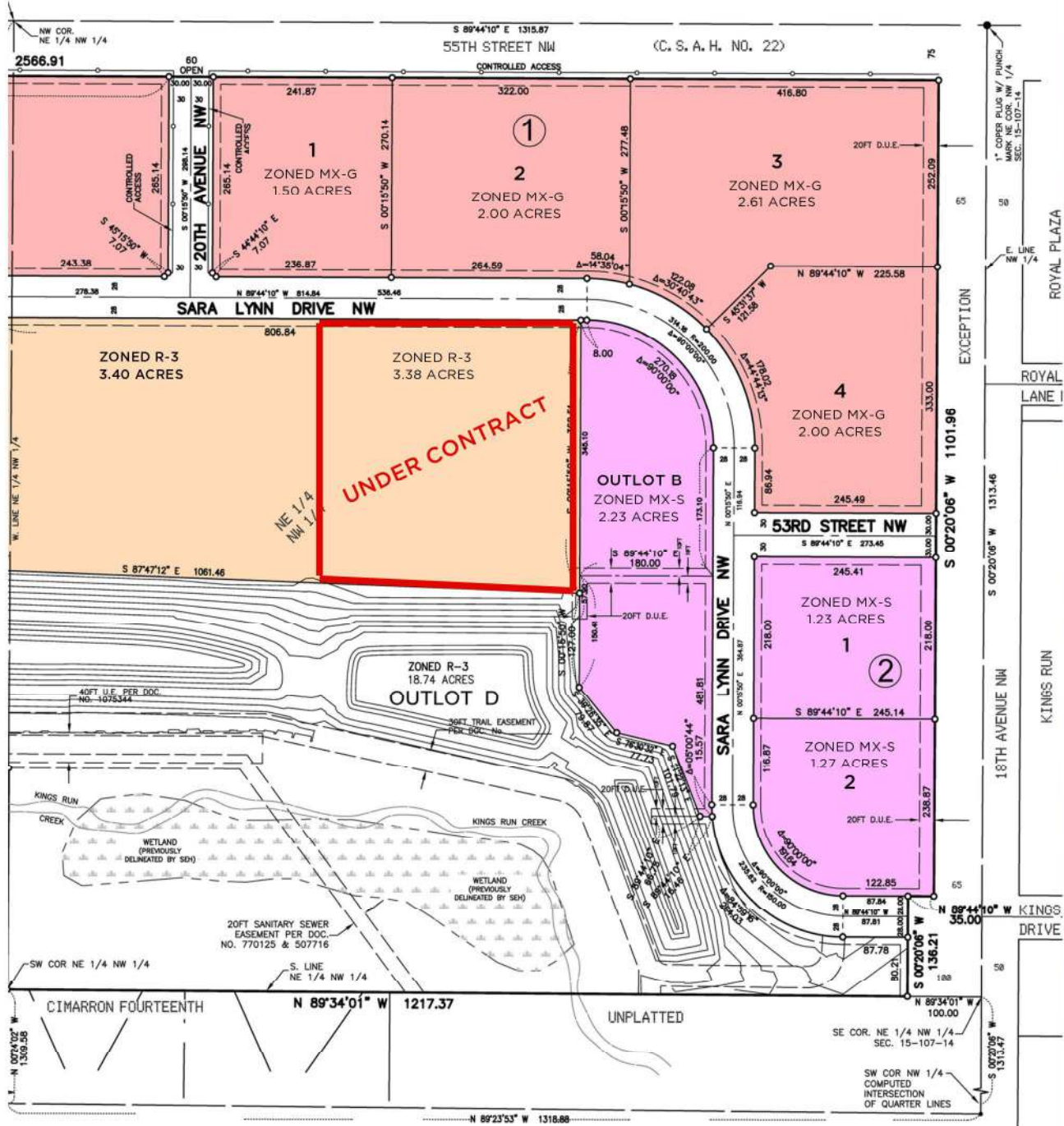
**PRICE:  
CALL FOR PRICING**

FOR MORE INFORMATION:

[VISIT OUR WEBSITE](#)

### CONTACT

Ryan Nolander | Principal  
ryan@hamiltonmnre.com  
O: 507-281-1002 ext 111 | M: 507-383-1820  
www.hamiltonmnre.com



**ZONING LEGEND**

- MX-G - Mid to high-intensity commercial
- R-3 - Multifamily residential
- MX-S - Low to mid-intensity commercial

**CONTACT**

Ryan Nolander | Principal  
ryan@hamiltonmre.com  
O: 507-281-1002 ext 111 | M: 507-383-1820  
www.hamiltonmre.com



**Traffic Counts:**  
55th Street - 18,200 CPD  
HWY 52 - 52,227 CPD

## CONTACT

Ryan Nolander | Principal  
ryan@hamiltonmre.com  
O: 507-281-1002 ext 111 | M: 507-383-1820  
www.hamiltonmre.com