

FOR SALE

Hickory Way Property

Lake City, MN

- This property located just one lot off of the fairways of the Jewel Golf Club in Lake City, MN totals 4.10 acres.
- The property is zoned as a Planned Unit Development and is designated by the City as a location for higher density housing like a townhome development.
- Multiple development plans have been designed for the property with a density ratio of approximately 7 units/acre.
- Another great feature of this property is the road, water and sewer are installed and the site is ready for development off of Hickory Way and Hidden Meadow Lane.
- The property is not subject to any HOA dues or fees.

\$435,000

**FOR MORE
INFORMATION:**

[VISIT OUR WEBSITE](#)

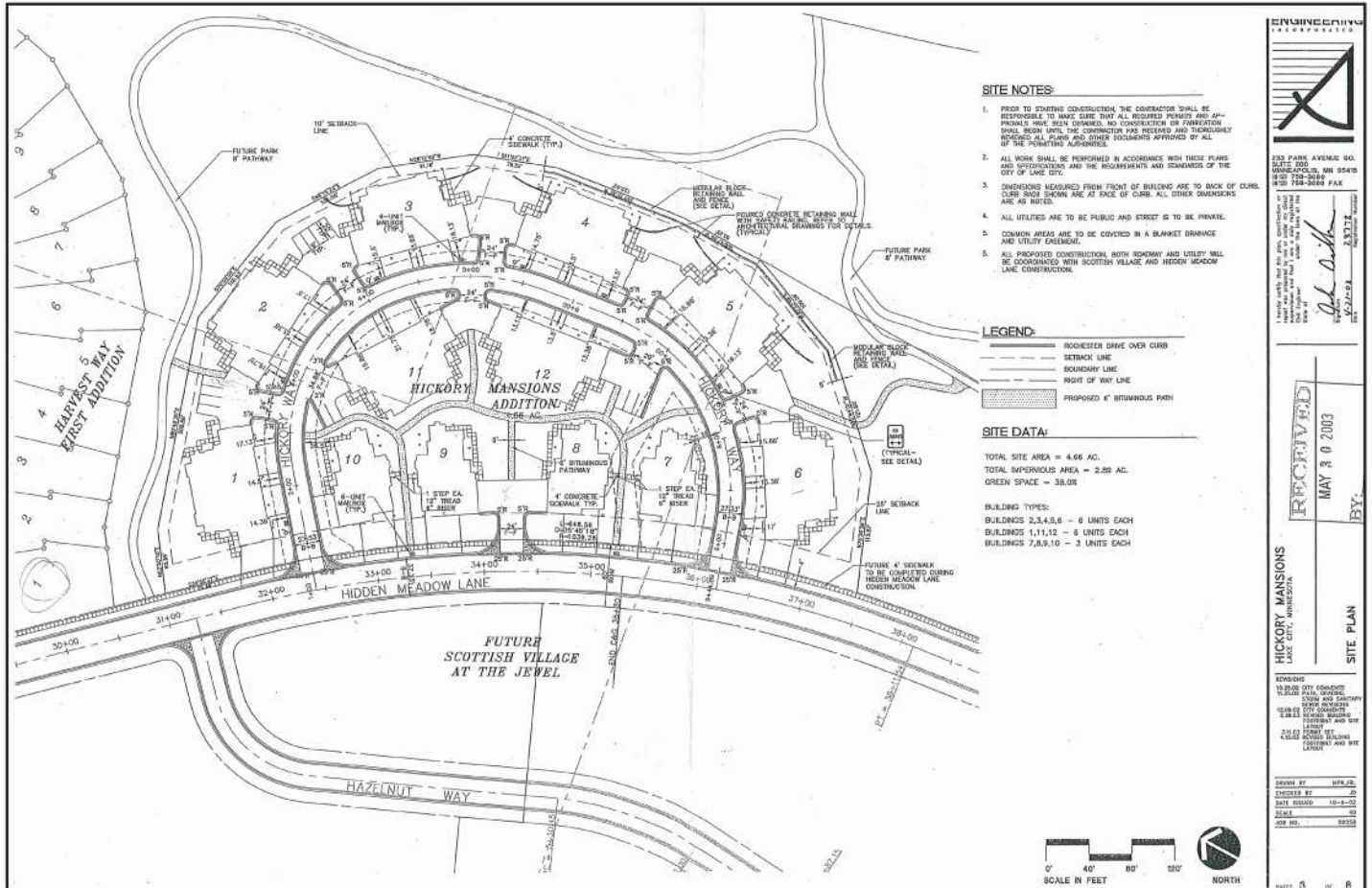
Contact me today to discuss
this amazing opportunity!

CONTACT

Ryan Nolander | Associate
ryan@hamiltonmnre.com
O: 507-281-1002 | M: 507-383-1820



Conceptual Layout



Previous PUD approval included **30 townhome units**, with a density ratio of approximately **7 units/acre**.

Contact me today to discuss this amazing opportunity!

CONTACT
Ryan Nolander | Associate
ryan@hamiltonmre.com
O: 507-281-1002 | M: 507-383-1820



Conceptual Layout



Previous PUD approval included **30 townhome units**, with a density ratio of approximately **7 units/acre**.

Contact me today to discuss
this amazing opportunity!

CONTACT

Ryan Nolander | Associate
ryan@hamiltonmnre.com
O: 507-281-1002 | M: 507-383-1820